



## CONTACT US

Kindly send request to

19 Kallang Avenue #04-153  
 Singapore 339410  
 +65 68993221  
[www.synergy4tech.com](http://www.synergy4tech.com)  
[sales@synergy4tech.com](mailto:sales@synergy4tech.com)

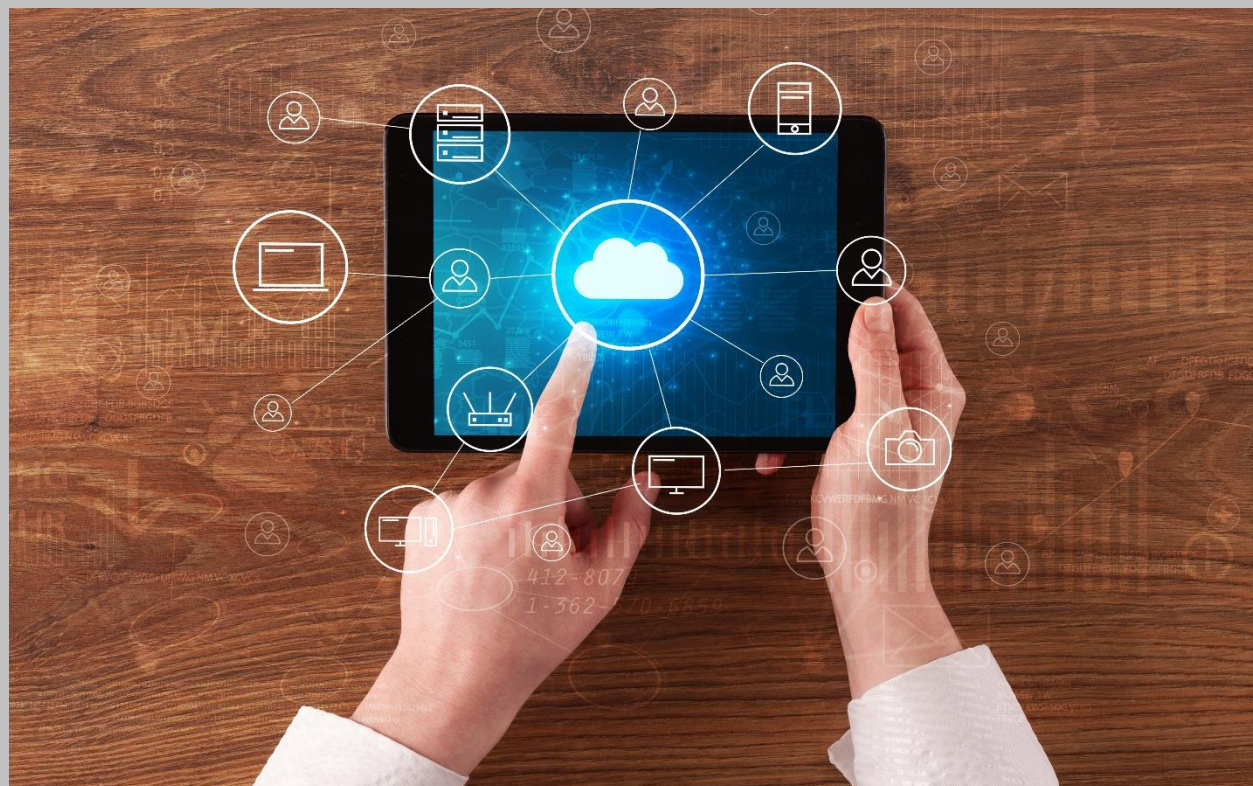
## XTE™ Unify XTE™ Console

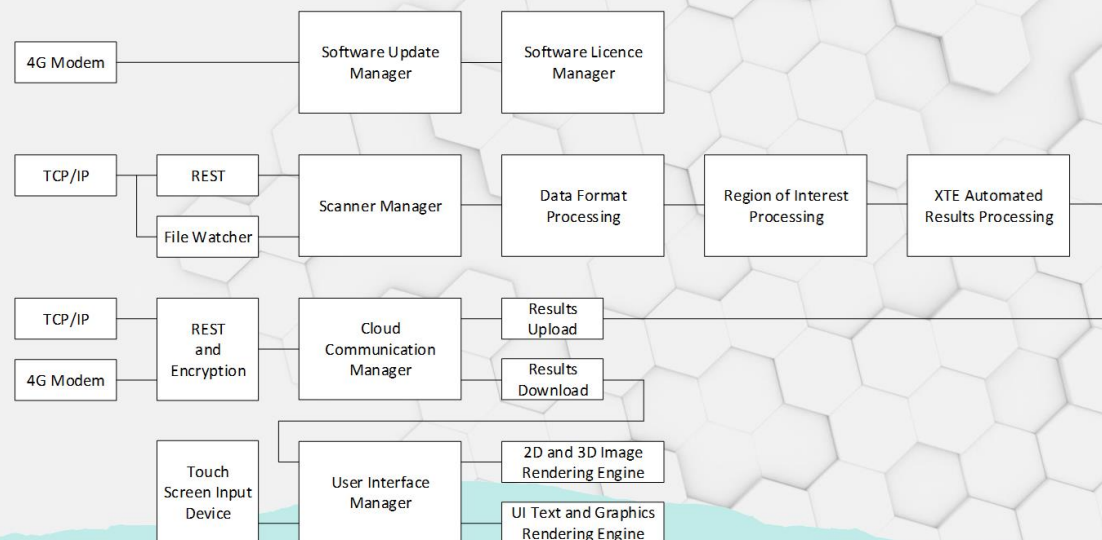
Automated Performance  
 Evaluation of X-Ray/ CT  
 scanners onsite or centralised  
 monitoring



## A Comprehensive Image Performance Evaluation Platform

Universal Test Platform (Any OEM)  
 Independent 3<sup>rd</sup> Party  
 Support DICOS Open Standard  
 Minutes evaluation  
 Cloud Ready  
 Open architecture ACRIS ready





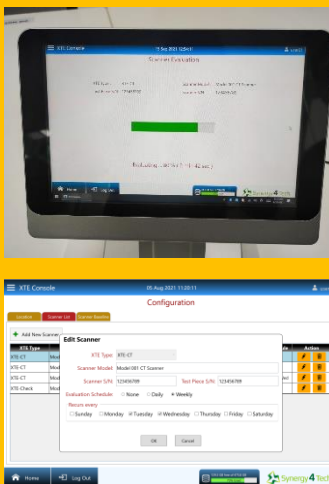
## XTE HIGH-LEVEL ARCHITECTURE

## XTE™ Unify

XTE-Unify software is designed to connect to X-ray scanners, to analyse XTE image data from scanners and to generate automated test reports for use in system characterisation and quality assurance.

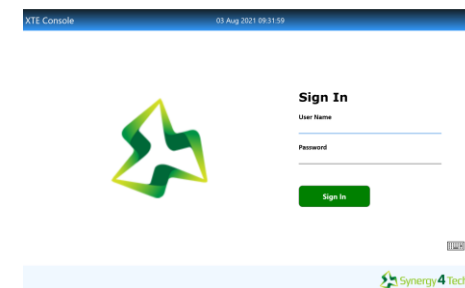
- Software update, license management and cloud services communication
- Scanner connection, XTE data processing and XTE data analysis
- User interface management and rendering

## XTE™ Console



10.1" Touch Panel

## XTE Unify Features



**Automated Software Update** – via 4G / intranet or usb

**License Key** – all XTE Unify modules must have a valid license key

**Cloud Communication** – via 4G, XTE Cloud or customer cloud.

**Scanner Connectors** – connection to any scanners OEM

**File Conversion** – Eg conversion to DICOS from raw data

**Algorithm Analysis** – selects 2D or 3D data, computation of ROI and scoring of the image

**UI** – Analysis, reporting, presentation, documentation and alarms

**Comparison of Subjective and Objective Analysis** – operators can compare both subjective and automated results

Copyright © 2022  
Patented