



# CONTACT US

Kindly send request to

19 Kallang Avenue #04-153  
 Singapore 339410  
 +65 68993221  
[www.synergy4tech.com](http://www.synergy4tech.com)  
[sales@synergy4tech.com](mailto:sales@synergy4tech.com)

# XTE™ CT and CT Medical

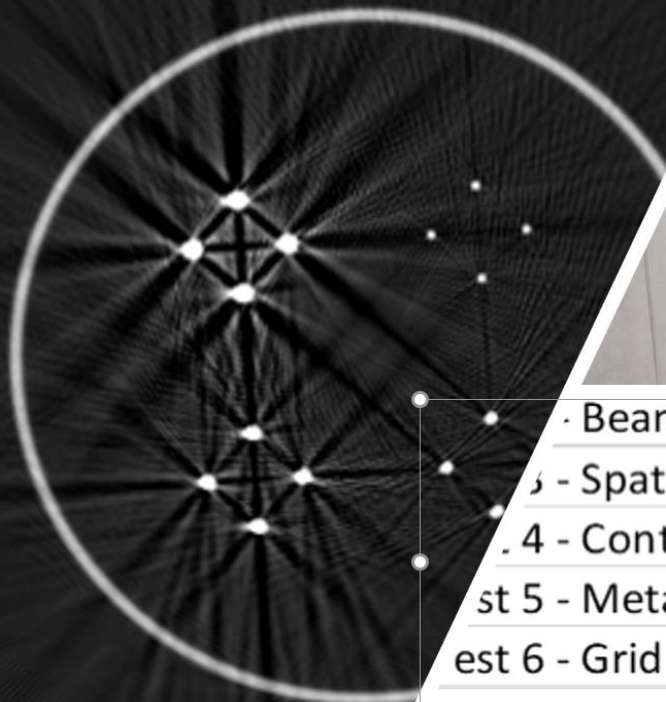
Performance Evaluation,  
 System Acceptance and  
 Scheduled Maintenance of  
 CT scanners in Security and  
 Medical Scanners



## A Comprehensive Image Performance Evaluation Platform

- Universal Test Platform (Any OEM)
- Independent 3<sup>rd</sup> Party
- One Pass
- Accurate
- Fast 5 Mins evaluation
- Automation Evaluation Ready
- Comprehensive 7 Tests





Test 1 - Beam hardening	2
Test 2 - Spatial Resolution	16
Test 3 - Contrast Detail	6
Test 4 - Metal Artefact	2
Test 5 - Grid and Wire Resolution	16
Test 6 - Small Inclusions	10

## XTE™ CT

Producing high quality images in CT is important for image interpretation and to obtain the maximum diagnostic information from the images.

CT image quality, as in most imaging, is described in terms of contrast, spatial resolution, image noise, and artifacts. XTE™ CT consists of 7 comprehensive tests that covers the above parameters.

- Offers both subjective and objective DICOS testing using XTE™ Unify
- One pass
- Open architecture ACRIS ready
- Single and multi energy source ready

## Dimension

**XTE™ CT Security**  
**300mmφ x 600mm**  
**Weight 22 Kg**

**XTE™ CT Medical**  
**250mmφ x 530mm**  
**Weight 18Kg**

# 7 Comprehensive Test

### Test 1 Contrast, Zeff and Density

Assessing incorrect densities measurement across different materials, diameters and scattering mediums

### Test 2 Beam Hardening

Evaluate the cupping and streaky artefacts of beam hardening on the scanner

### Test 3 Spatial Resolution

It is a measurement of how far apart 2 objects are before they can be seen to be separate. Proprietary “crows foot phantom” is used

### Test 4 Contrast Detail

Contrast is the measure of density difference between 2 areas. This test uses various diameters of holes of varying depths for evaluation between air and scattering medium

### Test 5 Metal Artefact

Metal artefacts creates bright and dark streaky strips across images. This test uses steel wires of varying thickness to create steak artefact in a controlled way for measurements

### Test 6 Grid and Wire Resolution

Evaluate grid resolution in both horizontal and vertical orientations. Different wire diameters are tested in air for wire resolution

### Test 7 Small Inclusion

Evaluate the presence of small inclusions that are both dense (filled) and light (air)

Copyright © 2022  
 Patented